

IHI Scube Co., Ltd.

Toyosu IHI Building, 3-1-1 Toyosu, Koto-ku, Tokyo 135-0061, Japan
Tel. 03-6204-8031

<https://www.iscube.co.jp/>

- Construction license
- Japan Information Technology Services Industry Association (JISA) member
- Japan Institute of Information Technology (JIIT) member

The following seven departments of IHI Scube Co. Ltd. has achieved a Maturity Level 3 in the Capability Maturity Model Integration (CMMI®) – a global standard for assigning maturity and capability levels to software development processes:

- Achieved in October 2022 Logistics System and FA Group, Digital Solution Division (Digital Solution Group, Service Solution Center)
- Achieved in March 2019 Business System Group, Business Solution Division (Business System Group, Business Solution Center)
Design Technology Group, Enterprise Solution Division (Energy Infrastructure Group, Engineering Solution Center)
- Achieved in March 2018 Energy and Plant Engineering Group, Business Solution Division (Energy Infrastructure Group, Engineering Solution Center)
Aero-Engine and Space Design Information Group, Advanced Solution Division (Design System Group, Engineering Solution Center)
Global Engineering Group, Enterprise Solution Division (Design System Group, Engineering Solution Center)
- Achieved in March 2017 CAD Product Engineering Group, Enterprise Solution Division (Design System Group, Engineering Solution Center)



IHI Scube Co., Ltd. has obtained the following certifications as an organization.

Quality Standard : ISO 9001 Certification	ISMS Standards ISO/ IEC 27001 Certification	Health and productivity	Sports Yell Company certification	Tokyo Sports Promotion Company certification
 JAB MS CM002	 ISMS-AC ISMS	 2024 健康経営優良法人 ホワイト500	 SPORTS YELL COMPANY 2024+	 TOKYO 2023



Corporate Profile

IHI Scube Co., Ltd.



President & CEO
Tadashi Kato

The Digital Technology Professionals of the IHI Group

Based on a management philosophy of “Contribute to the development of society through technology,” since its establishment in 1853, the IHI Group has leveraged its engineering prowess focused on “Monozukuri” technology to roll out a diverse portfolio of businesses all aimed at providing solutions to social challenges. Over the past few years, the social environment has been changing significantly. An example of these changes is the evolution of business models and work style brought about by digital transformation (DX).

The IHI Group is also transforming its businesses with its sights set on the ideal vision for our future society. All of the group businesses share a common theme of “How can we leverage digital technology to the fullest to offer our customers and society new

values?” As the IHI Group’s digital professionals, we unite as one with the Group’s business divisions in our efforts to achieve business transformation anticipating a new era.

IHI Scube adheres to our Code of Conduct focused on people, challenges, speed and appreciation. Drawing from the knowledge and experience we’ve obtained to date in the business areas of resources & energy, social infrastructure, industrial machinery, and aero & space, we will integrate the ever-evolving digital technology with the IHI Group’s future businesses in order to solve the challenges our customers face and help society advance on the whole. In an age of rapid change, we must not passively wait for change to happen, but rather proactively welcome change as a group of professionals bursting with energy.

Solution

Capitalizing on the experience and know-how cultivated by the IHI Group, we offer comprehensive solution services across the entire product or service life cycle.

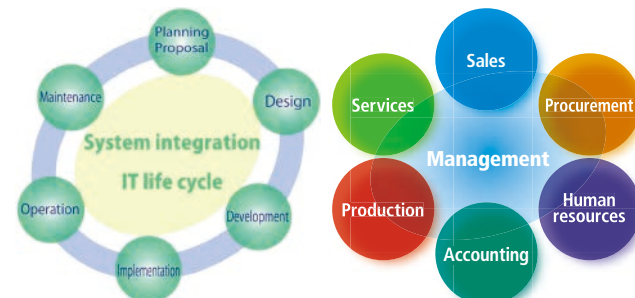
IHI Scube supports the development, operation and management of a wide range of systems, both administrative and technical. Our in-depth acquaintance with a broad range of businesses allows us to provide appropriate support for all needs from a front-line perspective. Making a relationship of trust with each customer our top priority, we thoroughly analyze the needs of our customers and pursue truly easy-to-use systems.

4 Solution Services



Business Solutions

Our rich lineup of business support software supports various aspects of business, including mission-critical systems for finance, sales, and human resources. We offer systems and services tailored to your needs, from business improvement consulting to implementation support and after-sales service.



Capitalizing on the wide range of experience and know-how cultivated by the IHI Group, we offer ideal proposals for constructing and designing systems that are optimized to the needs of each customer.

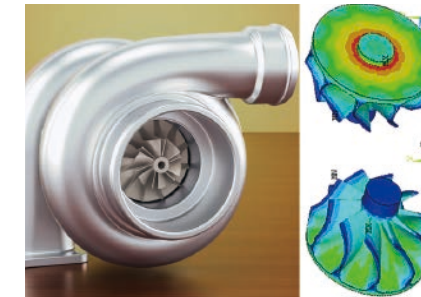
We propose systems that can optimize our customers' entire business process by linking related operations and systems rather than focusing on the individual scope of each business operation.

We provide a rich lineup of package products (iS Series) to help customers achieve business innovations. We also provide support for implementing package products from major ICT vendors including SAP® and Microsoft.

We provide support for planning, setting up and operating the systems required for our customers to expand their enterprises and business, including market expansion and regional control.

Engineering Solutions

By using ICT as an interface to link different areas of technology including PLM tools such as CAD/PDM, numerical analysis (CAE) and various IoT systems, IHI Scube provides one stop solutions that can be applied throughout the entire life cycle of products from implementation consultation and development to operation support.



IHI Scube provides a comprehensive array of analysis solutions – from commissioned structural, thermal and fluid analysis to design support tool development, and analysis consulting - that capitalize on the experience and knowhow in the analysis business that the IHI Group has cultivated in the field of manufacturing.



Providing one-stop support for all processes from implementation and customized development of 3D CAD/PDM systems to management of Bill of Material (BOM) and product information (technical data) in the Product Lifecycle Management (PLM) system, and provision of operational support.



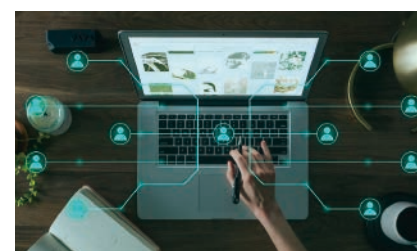
Manufacturing equipment such as robots and machine tools are an integral part of the manufacturing process. Factories can be transformed into smart factories by using ICT to manage the operation status of equipment and collect processing information, and using the stored data to manage and analyze processes.

Network Service Solutions

IHI Scube realizes the ideal network environment for each customer through optimized proposals and reliable technologies to support their businesses. We provide a variety of services based on our extensive experience in construction, maintenance, and operation in the information and telecommunications field.



IHI Scube offers AWS and various other cloud computing environments, whether private or public, tailored to our customers' needs. This empowers them to access necessary resources on-demand, minimizing initial investment and eliminating reliance on physical locations.



IHI Scube delivers an efficient communication environment adaptable to evolving business styles. Leveraging a diverse array of tools such as PCs, smartphones, videoconferencing, and IP phones, we ensure seamless connectivity. Additionally, IHI Scube proposes and implements communication environments tailored to diverse needs, including collaboration environments fostering secure and smooth cooperation with external partners and collaborators.



Our comprehensive suite includes the construction of secure network infrastructure and continuous security monitoring, all aimed at facilitating DX. We excel in SDN implementation, elevating network communication availability while lowering TCO. Additionally, our expertise extends to infrastructure construction, voice systems, and the design, construction, and operation of state-of-the-art infrastructure environments, leveraging innovative technologies. This diverse array of services forms a resilient backbone for both our clients' enterprises and the broader IHI Group ecosystem.

Supply Chain Solutions

IHI Scube's solutions dramatically improve cash-flow management environments by enhancing throughput and eliminating waste by resolving stagnation in the flow of goods and information. We help enhance the efficiency of our customer's business in all production and logistics processes by capitalizing on the experience and technologies cultivated by the IHI Group.



IHI Scube offers customers a production management system that leverages package software and scratch development to control vital aspects of the manufacturing process from production planning to BOM, logistic, and inventory management.



IHI Scube designs and develops Manufacturing execution systems (MES) and Warehouse management systems (WMS), which are critical to the efficient operation of production and logistics operations. We offer systems that contribute to addressing on-site issues, such as enhancing work quality, improving productivity, and reducing costs.



IHI Scube offers a system that uses IoT, mobile devices, and other new technologies to visualize work processes, including progress status at work sites, and operational status of equipment and devices.



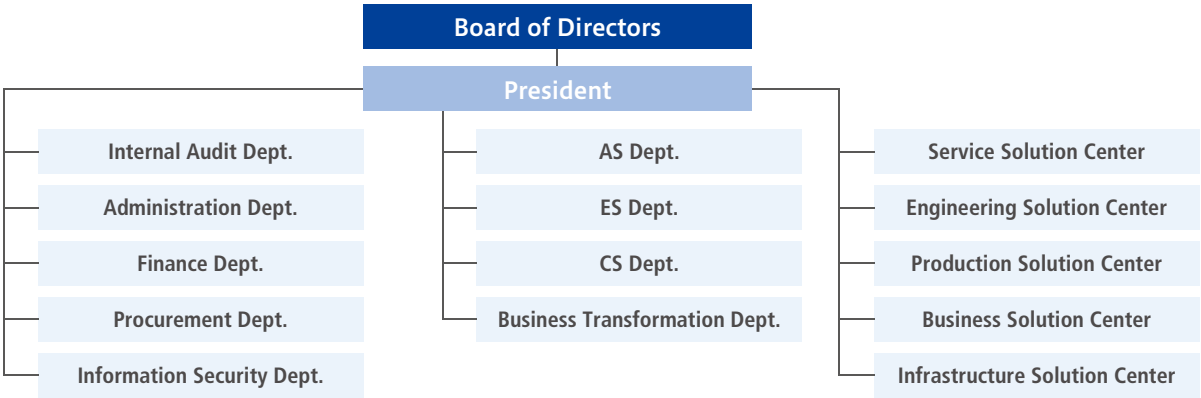
IHI Scube analyzes on-site work simulations, receiving and shipping, inventory, and other work processes. Our analysis tool can be used to discover bottlenecks in the work process, and to implement the optimal personnel and inventory allocation.

Corporate Profile

Company name	IHI Scube Co., Ltd.
Address	Toyosu IHI Building, 3-1-1 Toyosu, Koto-ku, Tokyo 135-0061, Japan
Incorporated	July 1, 1997
Established	April 1, 2003
Capital	260 million yen
Sales	26.6 billion yen (FY2024)
Representative	President & CEO Tadashi Kato
Shareholders	IHI Corporation IHI Business Support Corporation
Number of employees	540 (As of April 1, 2024, including directors)
Banks	Resona Bank, Ltd., Mizuho Bank, Ltd.

Business Contents	<ul style="list-style-type: none">Consulting and engineering for systems with a focus on information and communication technology, control electronics technology, and mechatronics technologyDevelopment, design, manufacture, installation, sale, lease, repair, maintenance, and import and export of software and hardware incidental or related to the preceding itemInformation processing services, information communication services, and information provision servicesCommunication network and data center managementSystem operation management incidental or related to the preceding itemsEducation and training, publishing, and technical support related to the preceding itemsDevelopment, design, manufacture, installation, sale, lease, repair, and maintenance of equipment and facilities related to factory automationTelecommunications construction and installation of machinery and toolsAdvertising-related planning, production, and advertising agencyBusiness incidental or related to the preceding items
-------------------	--

Organization Chart



List of Offices

Head Office Toyosu IHI Building, 3-1-1 Toyosu, Koto-ku, Tokyo 135-0061, Japan Tel. 03-6204-8031	Musashi Office (Chubu Branch Office) IHI Agri-Tech Matsumoto Head Office, 1-1-1 Ishishiba, Matsumoto-shi, Nagano 390-8714, Japan Tel. 0263-88-2238
Head Office Annex Toyosu Center Building, 3-3-3 Toyosu, Koto-ku, Tokyo 135-6006, Japan Tel. 03-5859-0701	Yokohama Office IHI Yokohama Office, 1 Shin-Nakahara-cho, Isogo-ku, Yokohama-shi, Kanagawa 235-8501, Japan Tel. 045-759-2038
Musashi Office IHI Akishima Office, West Tower, 3-2-1 Daikanyama, Akishima-shi, Tokyo 196-8686, Japan Tel. 042-500-7200	Aichi Office IHI Chubu Sales Office, Nagoya Mitsui Building New Annex, 24-20, Meieki-minami 1-chome, Nakamura-ku, Nagoya-shi, Aichi 450-0003, Japan Tel. 050-3684-3702
Musashi Office (Mizuho Branch Office) IHI Mizuho Plant, 229 Tonogaya, Mizuho-machi, Nishi-tamagun, Tokyo 190-1297, Japan Tel. 0425-68-7272	Aioi Office IHI Aioi Office, 5292 Aioi, Aioi-shi, Hyogo 678-0041, Japan Tel. 0791-24-2260
Musashi Office (Tsurugashima Branch Office) IHI Tsurugashima Plant, 1200 Otagaya, Tsurugashima-shi, Saitama 350-2295, Japan Tel. 049-273-9351	Kure Office IHI Kure Office, 2-1 Showa-cho, Kure-shi, Hiroshima 737-0027, Japan Tel. 0823-26-2190
Musashi Office (Soma Branch Office) IHI Soma Office, 1-2-1 Onodai, Soma-shi, Fukushima 976-0001, Japan Tel. 0244-37-3730	

History

We were born in 2003 through the merger of specialist groups of the IHI Group. We aim for a further leap forward as a “Comprehensive ICT Company”

