

IHI Scube Co., Ltd.

Toyosu IHI Building, 3-1-1 Toyosu, Koto-ku, Tokyo 135-0061, Japan
Tel. 03-6204-8031

<http://www.iscube.co.jp/>

- Construction license
- Japan Information Technology Services Industry Association (JISA) member
- Japan Institute of Information Technology (JIIT) member

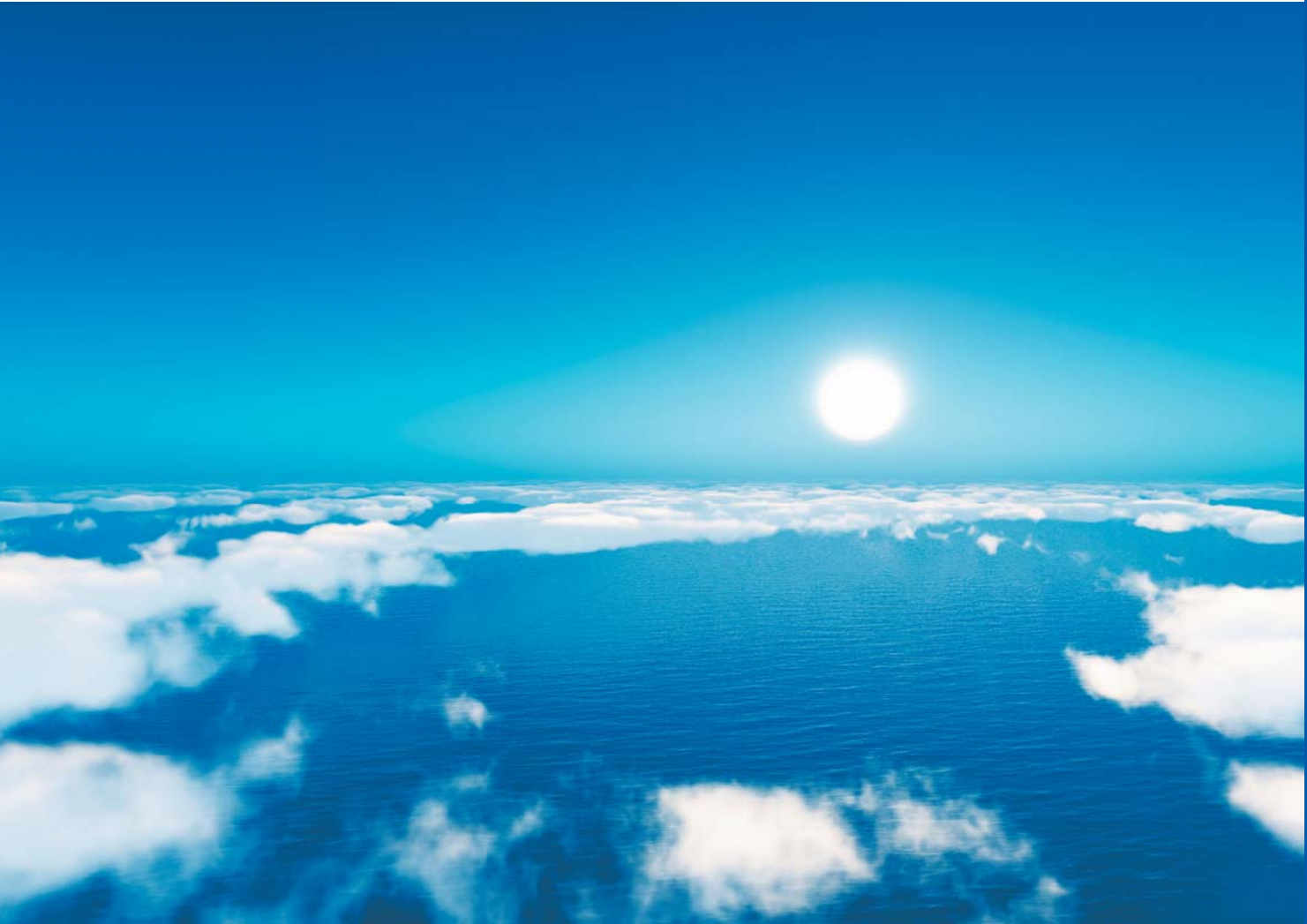
The following seven departments of IHI Scube Co. Ltd. has earned a Maturity Level 3 in the Capability Maturity Model Integration (CMMI®) – a global standard for assigning maturity and capability levels to software development processes:

- Aero-Engine and Space Design Information Group, Advanced Solution Division (Aero-Engine and Space Design Information Group, AS Division)
- Design Technology Group, Enterprise Solution Division (Design Technology Group, ES Division)
- CAD Product Engineering Group, Enterprise Solution Division (CAD Product Engineering Group, ES Division)
- Global Engineering Group, Enterprise Solution Division (Global Engineering Group, ES Division)
- Business System Group, Business Solution Division
- Logistics System and FA Group, Business Solution Division (Logistics System and FA Group, Digital Solution Division)
- Energy and Plant Engineering Group, Business Solution Division



IHI Scube Co., Ltd. has obtained the following certifications as an organization.

Quality Standard : ISO 09001 Certification	ISMS Standards ISO/ IEC 27001 Certification	Health and productivity	Sports Yell Company certification	Tokyo Sports Promotion Company certification



Corporate Profile

IHI Scube Co., Ltd.

We strive to help our customers evolve their businesses by providing the ICT based services and solutions, which we have cultivated in the field of manufacturing business.

IHI Scube provides a comprehensive array of ICT-based services – from consulting, equipment sales, system construction to operation and maintenance – that capitalize on the experience and know-how we have cultivated through our use of ICT in various aspects of the manufacturing business.

As a member of the IHI group, IHI Scube develops and provides ICT-based services and solutions that contribute to the evolution of a myriad of manufacturing businesses in such areas as aircraft engines, power plants, and bridges. In particular, we offer a wide range of ICT-based services to deliver engineering solutions such as 3D-CAD and PLM to support customers in the areas of advanced engineering; supply chain solutions that help businesses navigate the rapid fluctuations in production and logistics; a comprehensive and rich lineup of business solutions supporting various aspects of business, including finance, human resources, and general affairs; and network service solutions that provide highly reliable infrastructure solutions to support global business expansion.

Recent developments in the use of IoT and AI are bringing great changes to the field of manufacturing. The IHI Group is engaged in using ICT to develop advanced products, services, and manufacturing processes, promote the use of mobile technologies in the maintenance and inspection processes, and develop data collection and analysis technologies for use at plants. In this way, IHI Scube is actively taking on the challenge of driving innovation in manufacturing.

With our code of conduct focused on people, challenges, speed and appreciation, we strive to become reliable partners who can deliver high-value-added proposals that are custom-tailored to the individual needs of customers.

IHI Scube will integrate the latest ICT technologies with our vast store of knowledge and practical know-how to propose solutions that help our customers become who they want to be.

President & CEO
Yasushi Otsuki

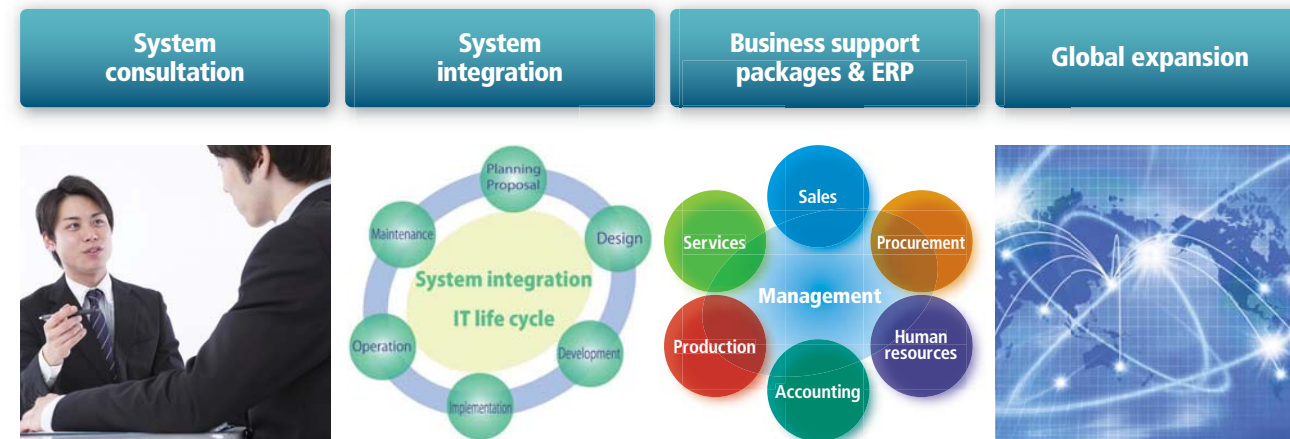


Solution Capitalizing on the experience and know-how cultivated by the IHI Group, we offer comprehensive ICT services across the entire product or service life cycle.

IHI Scube supports the development, operation and management of a wide range of systems, both administrative and technical. Our in-depth acquaintance with a broad range of businesses allows us to provide appropriate support for all needs from a front-line perspective. Making a relationship of trust with each customer our top priority, we thoroughly analyze the needs of our customers and pursue truly easy-to-use systems.

Business Solutions

Our rich lineup of business support software supports various aspects of business, including mission-critical systems for finance, sales, and human resources. We offer systems and services tailored to your needs, from business improvement consulting to implementation support and after-sales service.



Capitalizing on the wide range of experience and know-how cultivated by the IHI Group, we offer ideal proposals for constructing and designing systems that are optimized to the needs of each customer.

We propose systems that can optimize our customers' entire business process by linking related operations and systems rather than focusing on the individual scope of each business operation.

We provide a rich lineup of package products (iS Series) to help customers achieve business innovations. We also provide support for implementing package products from major ICT vendors including SAP® and Microsoft.

We provide support for planning, setting up and operating the systems required for our customers to expand their enterprises and business, including market expansion and regional control.

Engineering Solutions

By using ICT as an interface to link different areas of technology including PLM tools such as CAD/PDM, numerical analysis (CAE) and various IoT systems, IHI Scube provides one stop solutions that can be applied throughout the entire life cycle of products from implementation consultation and development to operation support.



IHI Scube provides a comprehensive array of analysis solutions – from commissioned structural, thermal and fluid analysis to design support tool development, and analysis consulting – that capitalize on the experience and knowhow in the analysis business that the IHI Group has cultivated in the field of manufacturing.

Providing one-stop support for all processes from implementation and customized development of 3D CAD/PDM systems to management of Bill of Material (BOM) and product information (technical data) in the Product Lifecycle Management (PLM) system, and provision of operational support.

Manufacturing equipment such as robots and machine tools are an integral part of the manufacturing process. Factories can be transformed into smart factories by using ICT to manage the operation status of equipment and collect processing information, and using the stored data to manage and analyze processes.

Network Service Solutions

IHI Scube realizes the ideal network environment for each customer through optimized proposals and reliable technologies, and utilizes ICT technologies to support customers in their businesses. We also use data centers to provide our customers with various services.



The Toyosu Data Center is an urban data center located just 20 minutes from Tokyo Station. The experienced staff at the data center provide a wide variety of operation services that conformed to ITIL standard. We provide these service support with backed by top-class facilities that can meet all our customers' needs

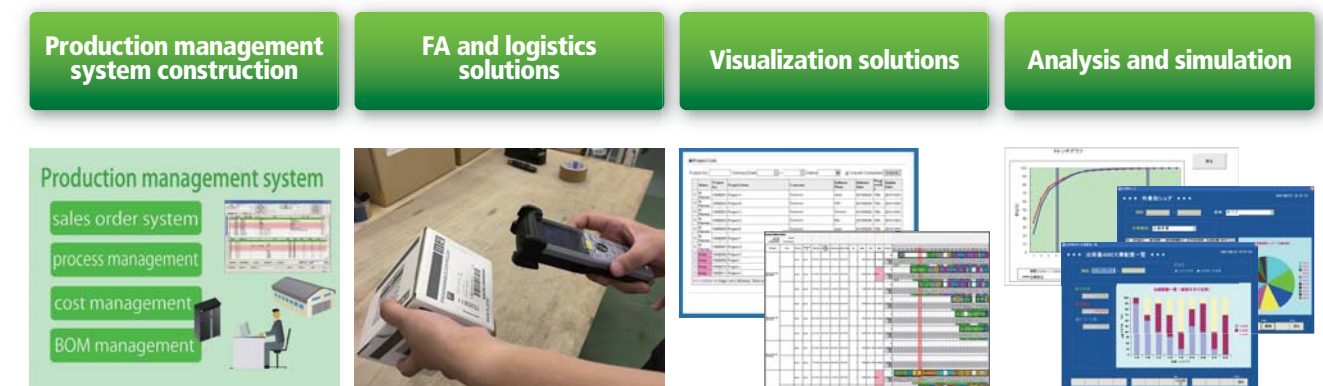
IHI Scube provides a unified communication environment across a wide range of devices including smartphones, tablets, video conferencing, mobile computing, and IP phones, on either on-premises or cloud-based platforms in line with customer needs.

IHI Scube uses advanced technologies to offer optimal services in network design, construction and operation to meet the needs of customers in such areas as constructing secure network infrastructure that supports IoT applications, and improving availability of network communication and reducing TCO through the implementation of SDN.

IHI Scube offers solutions covering the entire spectrum – from design to construction – of an optimal IP network system. We invite inquiries, including in regard to building a completely new network system at construction sites. We can also support the construction of a voice communication environment using IP phones or a PBX system.

Supply Chain Solutions

IHI Scube's solutions dramatically improve cash-flow management environments by enhancing throughput and eliminating waste by resolving stagnation in the flow of goods and information. We help enhance the efficiency of our customer's business in all production and logistics processes by capitalizing on the experience and technologies cultivated by the IHI Group.



IHI Scube offers customers a production management system that leverages package software and scratch development to control vital aspects of the manufacturing process from production planning to BOM, logistic, and inventory management.

IHI Scube designs and develops Manufacturing execution systems (MES) and Warehouse management systems (WMS), which are critical to the efficient operation of production and logistics operations. We offer systems that contribute to addressing on-site issues, such as enhancing work quality, improving productivity, and reducing costs.

IHI Scube offers a system that uses IoT, mobile devices, and other new technologies to visualize work processes, including progress status at work sites, and operational status of equipment and devices.

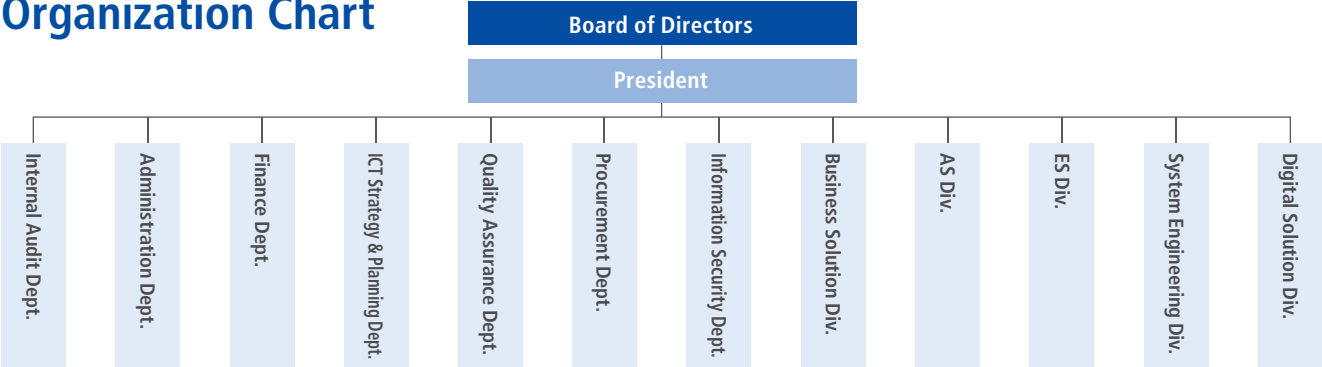
IHI Scube analyzes on-site work simulations, receiving and shipping, inventory, and other work processes. Our analysis tool can be used to discover bottlenecks in the work process, and to implement the optimal personnel and inventory allocation.

Corporate Profile

Company name	IHI Scube Co., Ltd.
Address	Toyosu IHI Building, 3-1-1 Toyosu, Koto-ku, Tokyo 135-0061, Japan
Incorporated	July 1, 1997
Established	April 1, 2003
Capital	260 million yen
Sales	19.5 billion yen (FY 2018)
Representative	President & CEO Yasushi Otsuki
Shareholders	IHI Corporation IHI Business Support Corporation
Number of employees	520 (as of April 2019)
Banks	Resona Bank, Ltd., Mizuho Bank, Ltd.

Business Contents	<ul style="list-style-type: none">● Consulting and engineering for systems with a focus on information-communication technology and mechatronics technology● Development, design, manufacture, installation, sale, lease, repair, maintenance, and import and export of software and hardware incidental or related to the preceding item● Information processing services, information communication services, and information provision services● Communication network and data center management● System operation management incidental or related to the preceding items● Education and training, publishing, and technical support related to the preceding items● Development, design, manufacture, installation, sale, lease, repair, and maintenance of equipment and facilities related to factory automation● Development, design, manufacture, installation, sale, lease, repair, and maintenance of bicycle parking facilities● Telecommunications construction, electrical construction, and installation of machinery and tools● Advertising-related planning, production, and advertising agency● Trading of used equipment● Worker dispatching services● Business incidental or related to the preceding items
-------------------	--

Organization Chart



List of Offices

Head Office Toyosu IHI Building, 3-1-1 Toyosu, Koto-ku, Tokyo 135-0061, Japan Tel. 03-6204-8031	Yokohama Office IHI Yokohama Office, 1 Shin-Nakahara-cho, Isogo-ku, Yokohama, Kanagawa 235-8501, Japan Tel. 045-759-2047
Head Office Annex Toyosu Center Building, 3-3-3 Toyosu, Koto-ku, Tokyo 135-6006, Japan Tel. 03-5859-0701	Yokohama Office (Chubu Branch Office) IHI Uglitech Matsumoto head Office, 1-1-1, Ishishiba, Matsumoto, Nagano 390-8714, Japan Tel. 0263-28-6396
Yurakucho Office Shin-Yurakucho Building, 1-12-1 Yurakucho, Chiyoda-ku, Tokyo 100-0006, Japan Tel. 03-3213-7600	Aichi Office IHI Aichi Office, 11-1 Kitahama-machi, Chita, Aichi 478-8650, Japan Tel. 0562-31-8028
Musashi Office IHI Akishima Office, West Tower, 3975-18 Haijima-cho, Akishima, Tokyo 196-8686, Japan Tel. 042-500-7200	Aioi Office IHI Aioi Office, 5292 Aioi, Aioi, Hyogo 678-0041, Japan Tel. 0791-24-2260
Musashi Office (Mizuho Branch Office) IHI Mizuho Plant, 229 Tonogaya, Mizuho-machi, Nishi-tamagun, Tokyo 190-1297, Japan Tel. 0425-68-7272	Kure Office IHI Kure Office, 2-1 Showa-cho, Kure, Hiroshima 737-0027, Japan Tel. 0823-26-2190
Musashi Office (Soma Branch Office) IHI Soma Plant, 1-2-1 Onodai, Soma, Fukushima 976-0001, Japan Tel. 0244-37-3730	

History

We were born in 2003 through the merger of specialist groups of the IHI Group.

We aim for a further leap forward as a “Comprehensive ICT Company”



^{*1} Logistics System and FA Group, Business Solution Division; and CAD Product Engineering Group, Enterprise Solution Division
^{*2} Energy and Plant Engineering Group, Business Solution Division; Aero-Engine and Space Design Information Group, Advanced Solution Division; and Global Engineering Group, Enterprise Solution Division.
^{*3} Business System Group, Business Solution Division; Design Technology Group, Enterprise Solution Division